

**FISHWATCH 2024 MONTHLY REPORT  
JUNE 2024  
by Edward Kikumoto**

**PART 2 OF 2**

DISCLAIMER

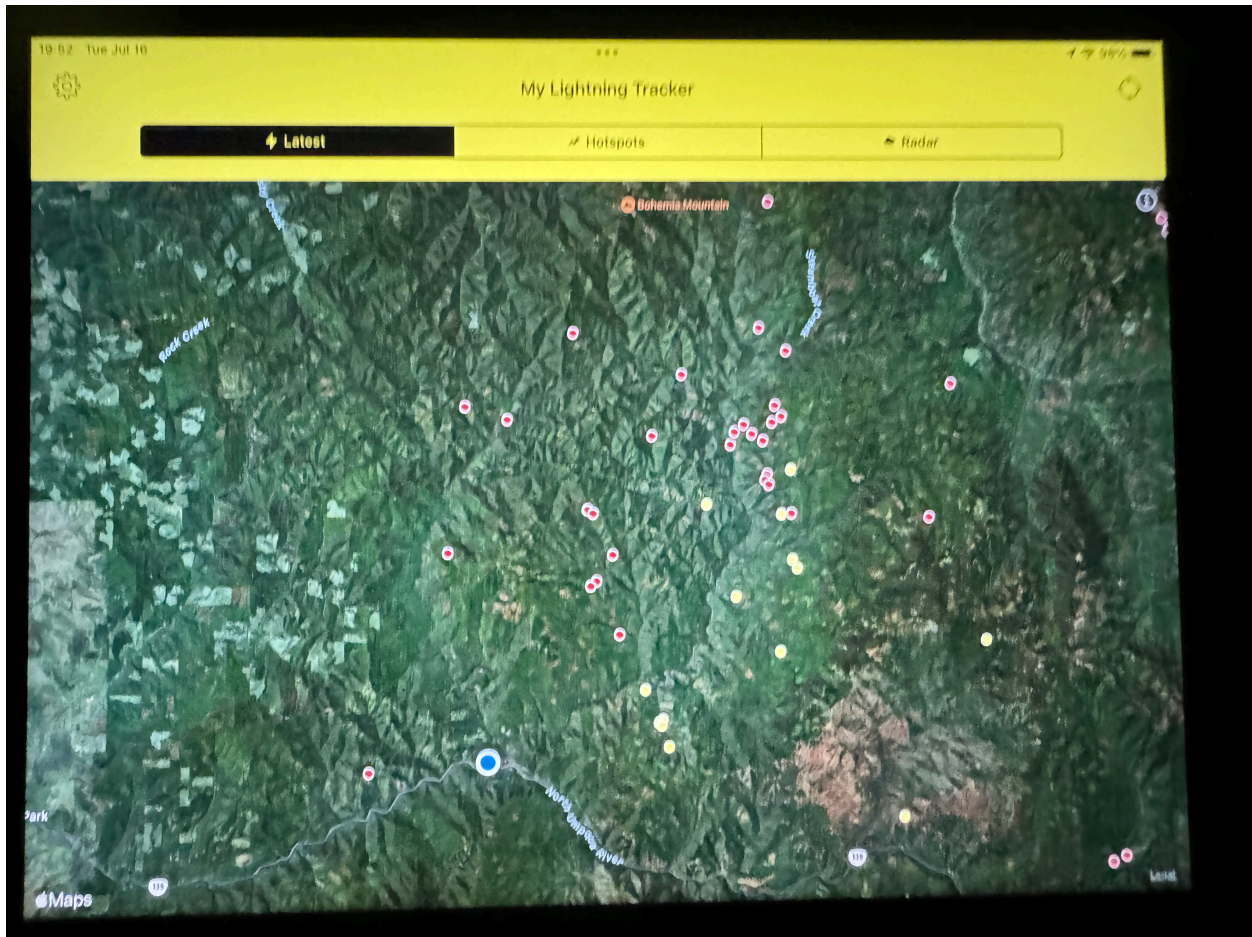
*The opinions in this report are strictly my own, and do not reflect the views and opinions of the U.S. Forest Service, the Oregon Department of Fish & Wildlife, or The North Umpqua Foundation.*

**A BRIEF JULY UPDATE: WILDFIRE**

This is a brief status report about what is occurring in Steamboat Creek Basin in regards to FishWatch in July. I will have much more detail in my July monthly report, which won't be going out until August.

On July 16, Tuesday at approximately 20:00, thunderstorm activity passed over Steamboat Creek Basin.

My Lightning Tracker app showed innumerable lightning occurrences over the Basin. The storm pretty much passed by 20:30, with only very sporadic occurrences on the periphery of the Basin to 23:00.



My Lightning Tracker 07.16.24 @ 19:52. The blue dot is Steamboat. The squiggly line leading up and to the right is Steamboat Creek. The Big Bend Pool is about halfway between the blue dot and "Steamboat Creek." All the red dots are lightning occurrences within 15-minutes of 19:52, and the yellow dots are within 30-minutes.

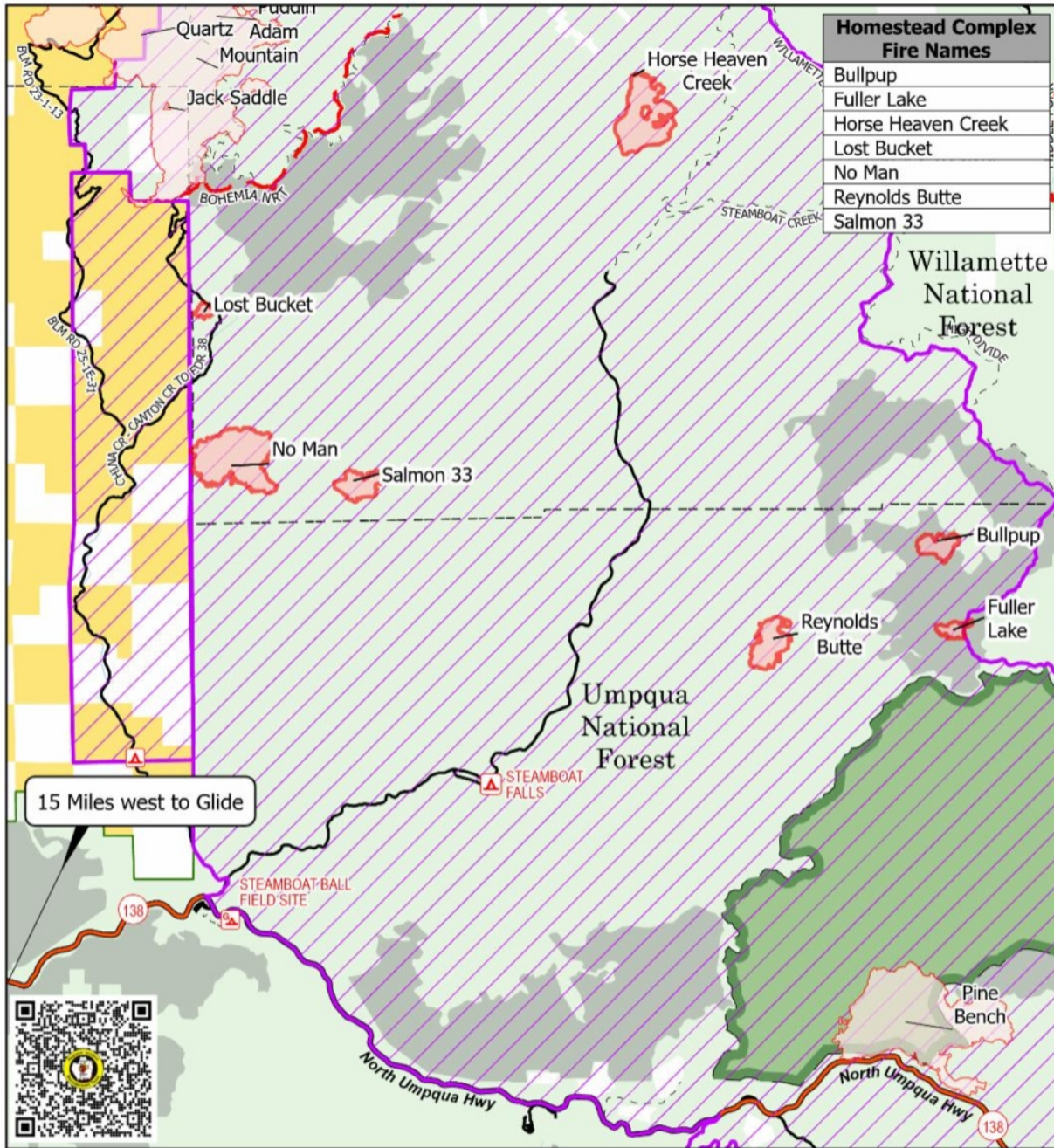
Note that not all of the lightning occurrences will actually strike the ground. Looking at this map, there is no way to tell if an occurrence hit the ground.

*The US Forest Service calls these "incidents" and numbers them. The only way to really know if an "incident" hit the ground or not is to have someone go look, and or see smoke rising out of the forest. Strikes can smolder in the understory for days before flaring into open flame, and the forest canopy can disperse light smoke. A satellite infrared photograph may also be used to track heat sources subsequent to a thunderstorm, or a nighttime flyover by aircraft.*

The result of the July 16 thunderstorm was seven (7) confirmed fires within Steamboat Creek Basin – The Homestead Complex Fires. Thankfully all of

them are on the edges of the Basin. The area alongside Steamboat Creek from its confluence with the North Umpqua River up to Horse Heaven Creek (about 18 miles) is far enough away from the wildfires to not be threatened.

Steamboat Creek Road (FSR 38), from its junction with Hwy 138 to Horse Heaven Creek is safe from wildfires.



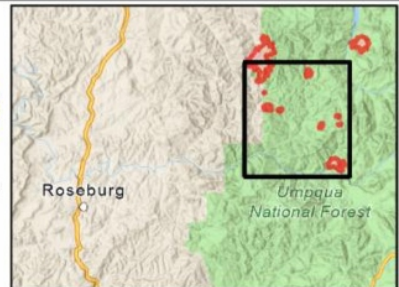
Homestead Complex Fire Names	
Bullpup	
Fuller Lake	
Horse Heaven Creek	
Lost Bucket	
No Man	
Reynolds Butte	
Salmon 33	

## Homestead Complex

Homestead Complex  
 OR-UPF-240311  
 7/31/2024  
 1,892 acres at 7/30/2024 2100 PDT  
 5% Contained

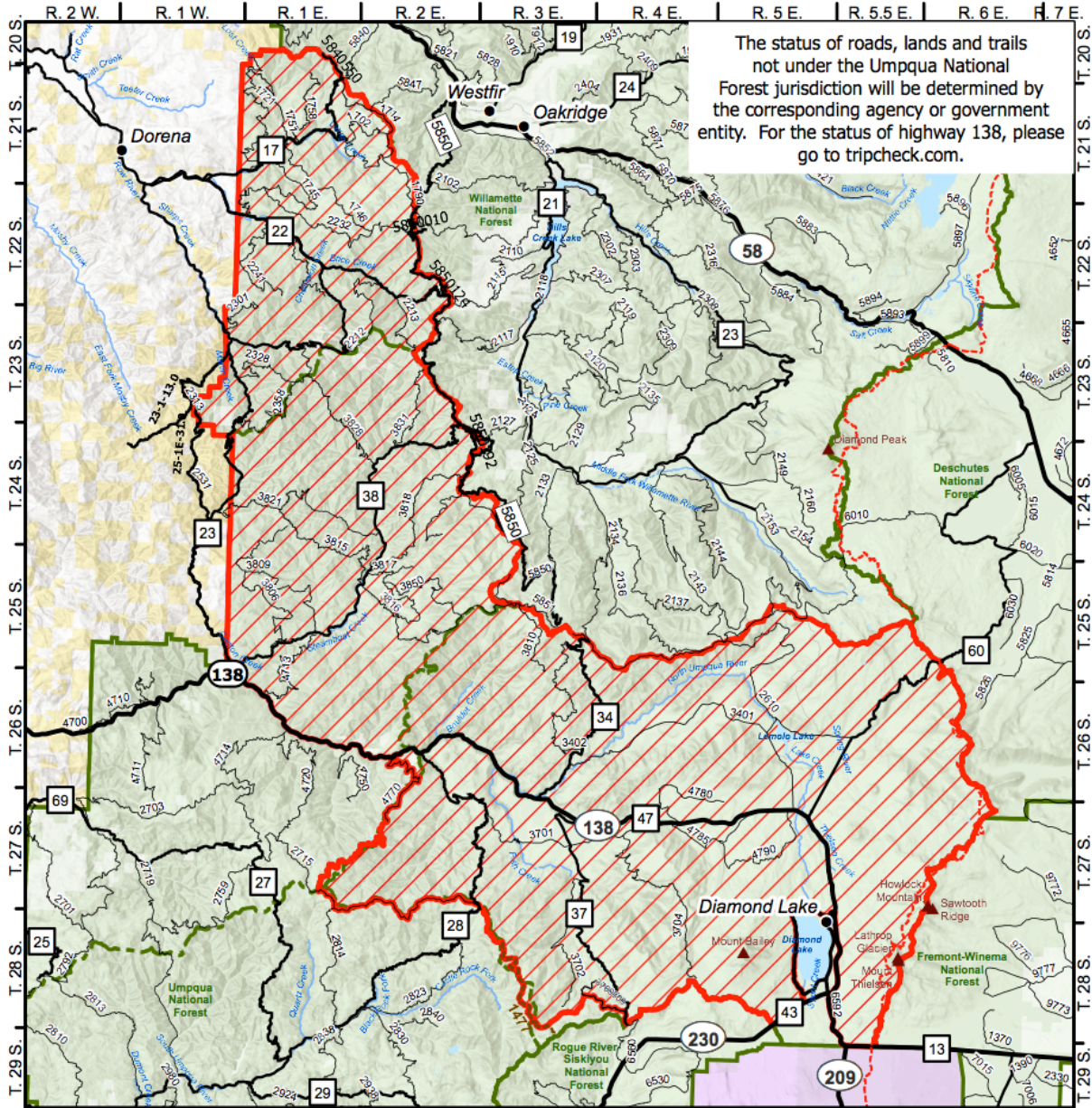
0 0.5 1 2 3  
 Miles

- Wildfire Daily Fire Perimeter - Adjacent Incidents
- Wildfire Daily Fire Perimeter - Homestead Complex
- Secondary Highway
- Road, Paved
- Road, Dirt/Gravel
- USFS Roadless Areas
- FS Wilderness Boundary
- Forest Service Land
- Bureau of Land Management Lands
- National Designated Trail
- Forest Service Closure Area (06-15-24-03)
- BLM Closure Area

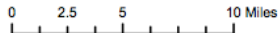


Homestead Complex 07.31.24. The purple border and the broken red line at the top left define Steamboat Creek Basin. If you draw a line between Salmon 33 and Reynolds Butte, where the line crosses the squiggly line, which is Steamboat Creek, is the location of Big Bend Pool.

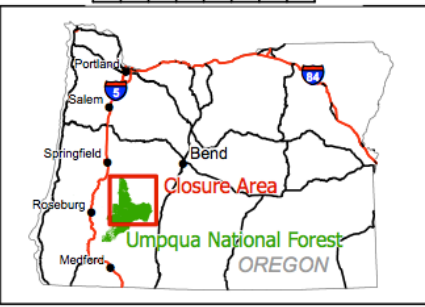
All of the wildfires in Steamboat Creek Basin are being accessed from Steamboat Creek Road, which makes travel on the road by non-government personnel a hazard. There are currently (07.31.24) 481 personnel actively fighting wildfires in the Basin. Therefore, the Umpqua National Forest closed access to most of its forest to public access on July 20, due to wildfires caused by the July 16 thunderstorms, not only in Steamboat Creek Basin but also in much of the forest.



The status of roads, lands and trails not under the Umpqua National Forest jurisdiction will be determined by the corresponding agency or government entity. For the status of highway 138, please go to [tripcheck.com](http://tripcheck.com).



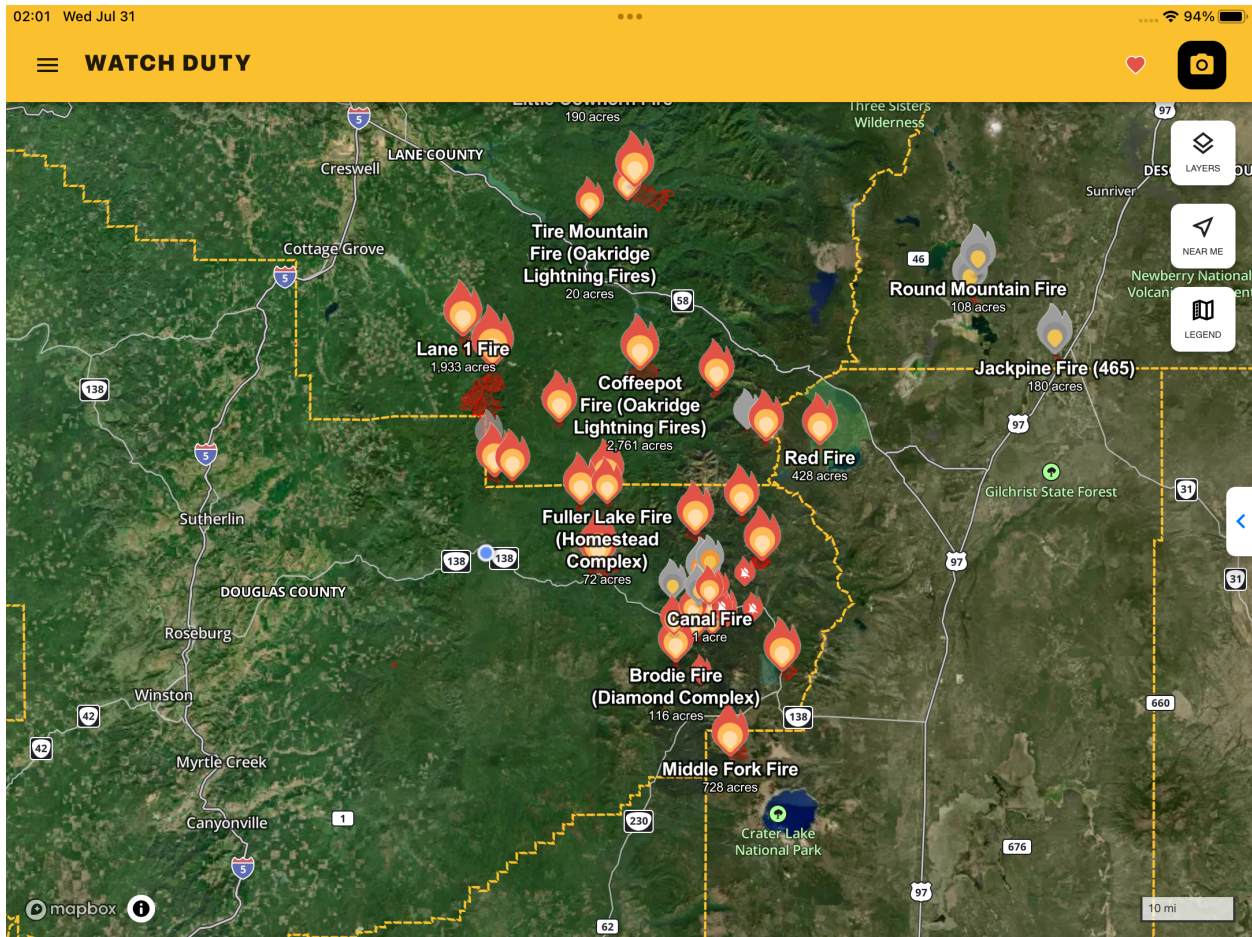
**Diamond Complex Closure Exhibit A**  
**Closure Number 06-15-24-03**  
**Umpqua National Forest 541-440-4930**



- Area Closure
- Pacific Crest Trail
- Trails
- Ranger District Boundary
- USFS Admin Boundary
- National Forest Land
- Bureau of Land Management
- Bureau of Indian Affairs
- National Park Service
- Other Federal Land
- Other Land, Including Private



Umpqua National Forest Public Access Closure Area 07.20.24.



Watch Duty 07.31.24. The wildfires in and around the Umpqua National Forest.

On July 27, I heard back from the Forest Service that FishWatch's request for an access waiver was denied, and that all FishWatch infrastructure at the Big Bend Pool must be removed, including the propane tank and portable toilets. I am in the process of organizing the extraction process.

I think it's likely that Steamboat Creek Basin will stay closed to public access through September and possibly mid-October.

#### 07.31.24 Fire Danger Levels

- Fire Danger: Very High 4  
(Low 1, Moderate 2, High 3, Very High 4, Extreme 5)
- IFPL (Industrial Fire Precaution Levels): Restricted Shutdown 3  
(Fire Season 1, Limited Shutdown 2, Restricted Shutdown 3, Complete Shutdown 4)
- PUR (Public Use Restrictions): 3  
(No Restrictions, PUR 1, PUR 2, PUR 3)



END OF UPDATE

Ed Kikumoto  
FishWatch 2024 Caretaker