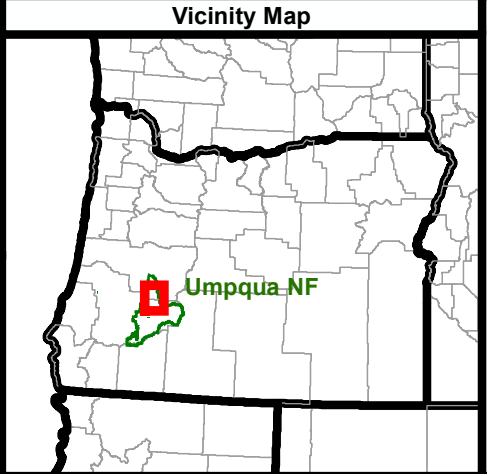
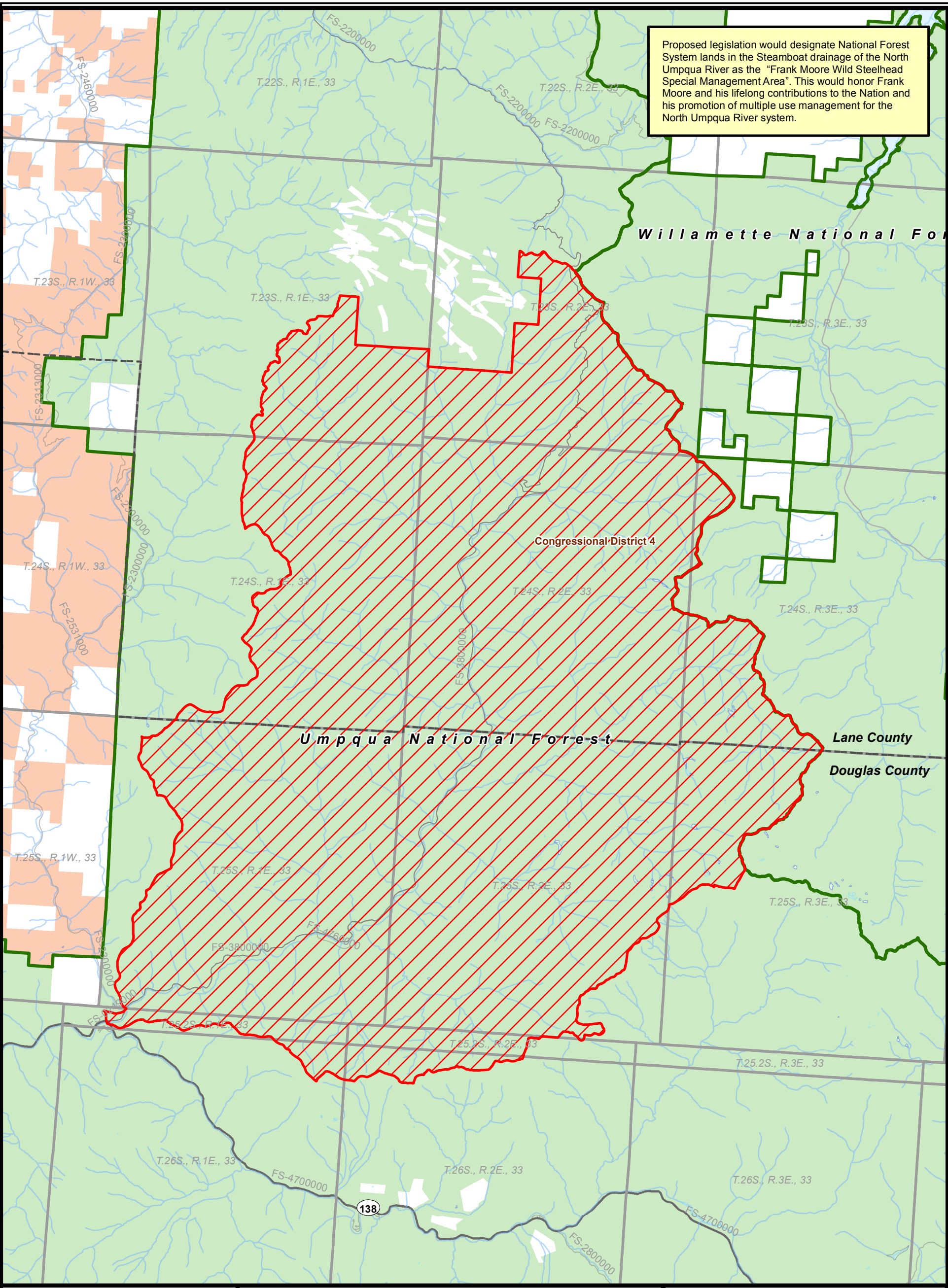


Proposed legislation would designate National Forest System lands in the Steamboat drainage of the North Umpqua River as the "Frank Moore Wild Steelhead Special Management Area". This would honor Frank Moore and his lifelong contributions to the Nation and his promotion of multiple use management for the North Umpqua River system.



Sheet 1 of 1

**Disclaimer**  
The USDA Forest Service makes no warranty, expressed or implied regarding the data displayed on this map, and reserves the right to correct, update, modify, or replace this information without notification.

Map Creation Date - 06-02-2016  
Map Revision Date - 06-23-2016

0 0.5 1 2 Miles

Proposal Area	State Highway
USDA Forest Service	Major FS road
USDI Bureau of Land Management	FS road
Administrative Forest	Streams
Congressional District	Township
County	
State	

**Frank Moore Wild Steelhead Special Management Area Designation Act (S. 1448) Legislative Map**

Map accompanying S 1448 to designate the Frank Moore Wild Steelhead Special Management Area in the State of Oregon

99,653 acres located at Townships 24-25 South, Ranges 1-2 East, Willamette Meridian Lane and Douglas Counties, Oregon

U.S. Forest Service - Pacific Northwest Region  
Umpqua National Forest  
U.S. Congressional District 4

This map accompanies the "Frank Moore Wild Steelhead Special Management Area Designation Act of 2016" S. 1448 introduced by Sen. Ron Wyden (D-OR) on October 8th, 2015.

Data used in creation of this map are on file with USDA FS WO Lands ALP.